



Morecambe Offshore Windfarm: Generation Assets Environmental Statement

Volume 5

Chapter 18 SLVIA Figures (Part 29 of 34)

PINS Document Reference: 5.3.18.29

APFP Regulation: 5(2)(a)

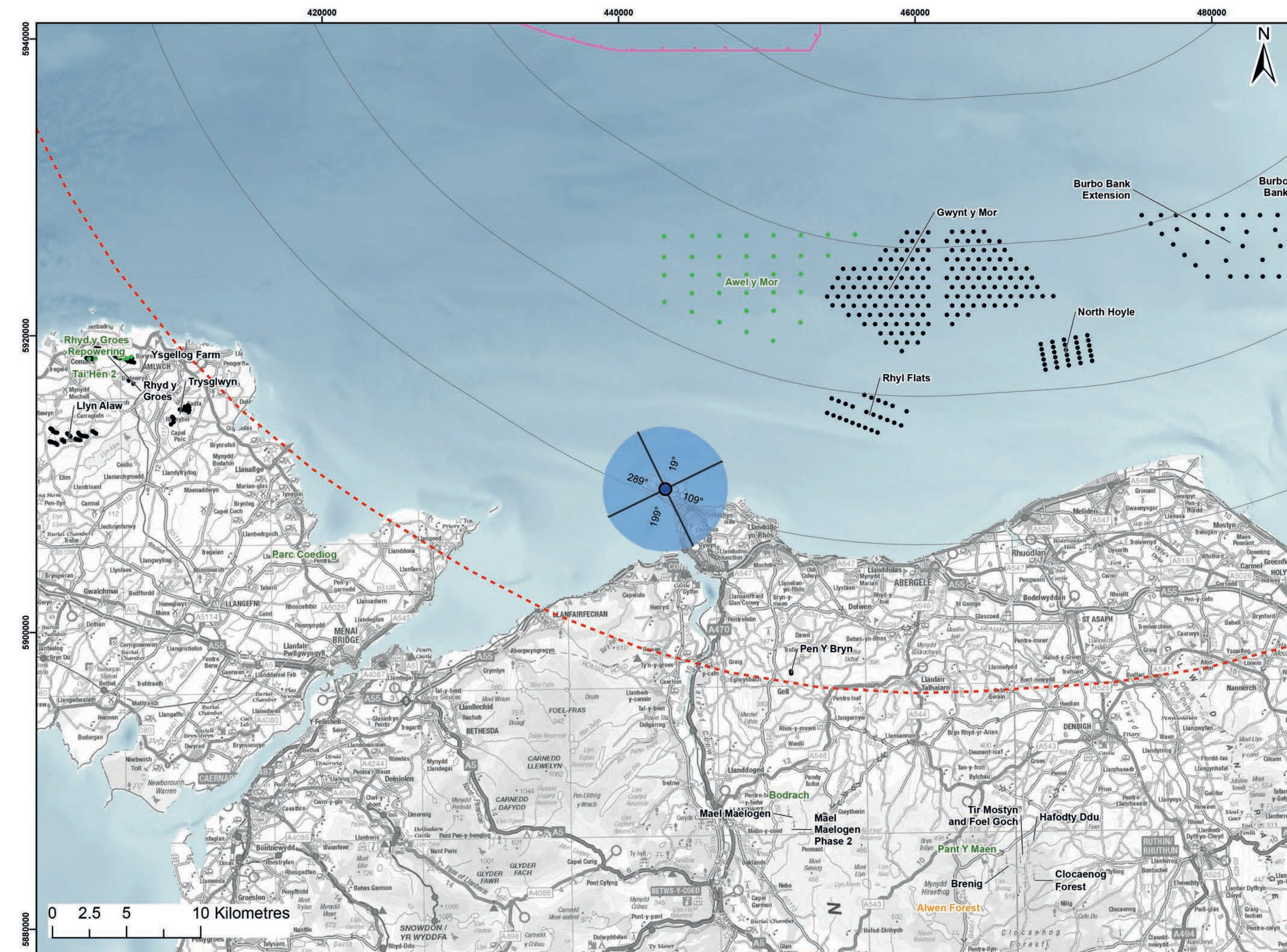
Rev 01



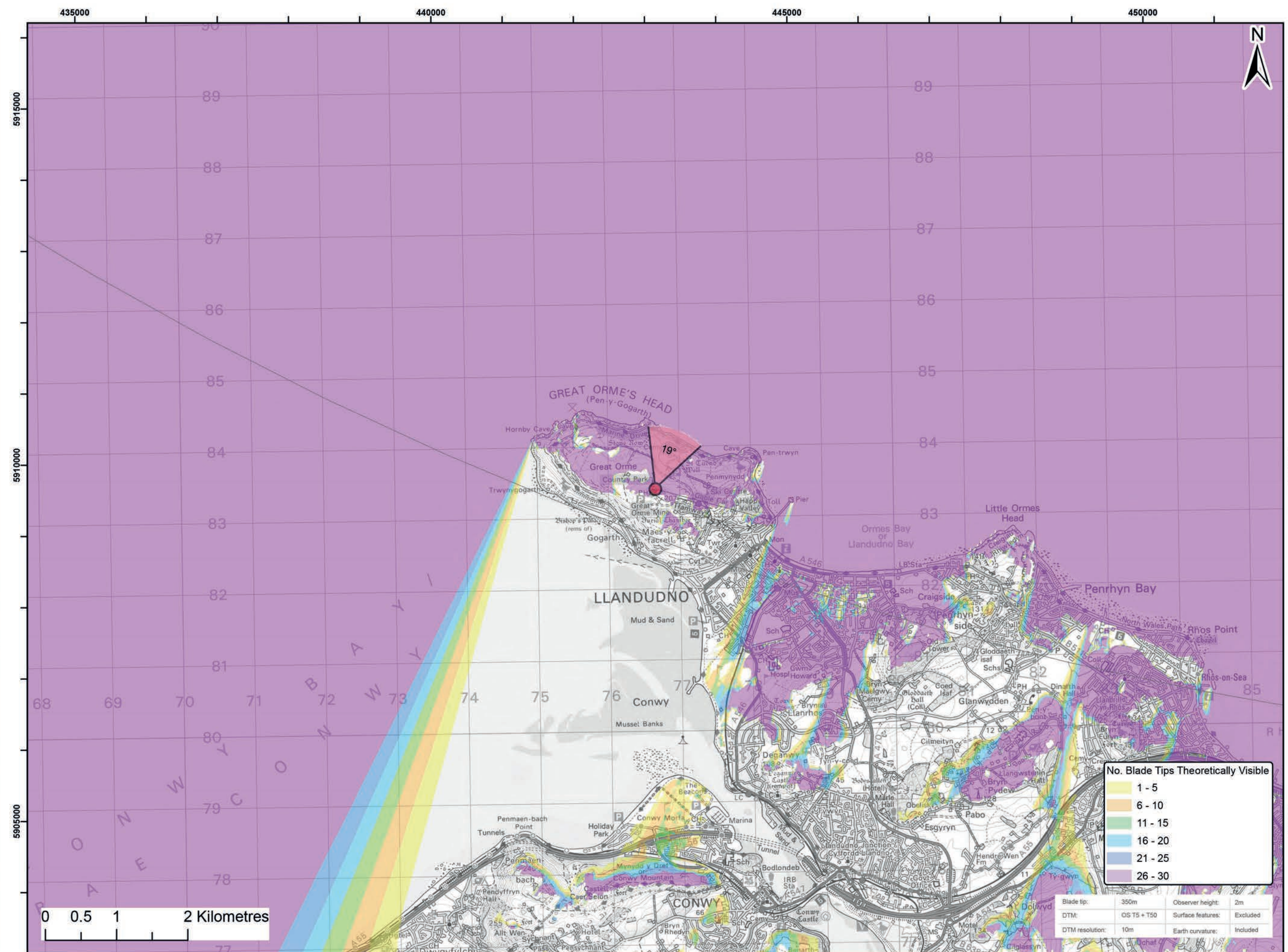
Document History

Doc No	MOR001-FLO-CON-ENV-FIG-1180	Rev	01
Alt Doc No	PC1165-RHD-ES-XX-DG-Z-0018		
Document Status	Approved for Use	Doc Date	May 2024
PINS Doc Ref	5.3.18.29	APFP Ref	5(2)(a)

Rev	Date	Doc Status	Originator	Reviewer	Approver	Modifications
01	May 2024	Approved for Use	Royal HaskoningDHV	Morecambe Offshore Windfarm Ltd	Morecambe Offshore Windfarm Ltd	n/a



Viewpoint Location Plan Baseline Panorama (90 Degree View)
Scale: 1:200,000



Viewpoint Location Plan (53.5 Degree View)
Scale: 1:50,000

Legend:

- Morecambe Offshore Wind Farm locations (30 x BT 310m(HAT))
- ▼ 90 Degree Field of View
- ▼ 53.5 Degree Field of View
- 10km Radii
- 60km Study Area
- Morecambe Offshore Windfarm Site

Cumulative Wind Farms Status

- Operational
- Under Construction
- Consented
- Application
- Scoping
- Pre-Application

© Crown copyright and database rights (2023) Ordnance Survey 0100031673.

Report:
Morecambe Offshore Windfarm: Generation Assets Environmental Statement

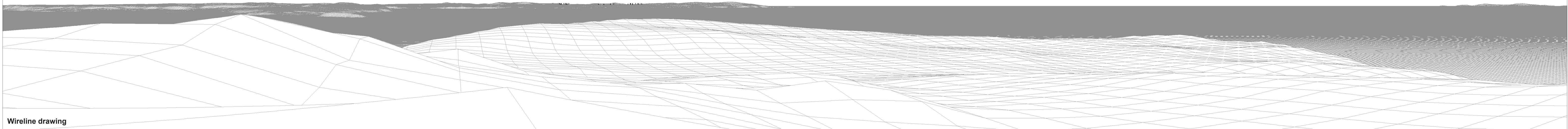
Title:
Viewpoint 23:
Great Orme's Head

Figure: 18.46a	Drawing No: 211609				
Revision: P02	Date: 25/09/2023	Drawn: RA	Checked: SM	Size: A3	Scale: 1:50,000

Co-ordinate system: WGS 1984 UTM Zone 30N



Llyn Alaw (38.6km) Trysglwyn (32.5km) Ysgellog Farm (36.6km)

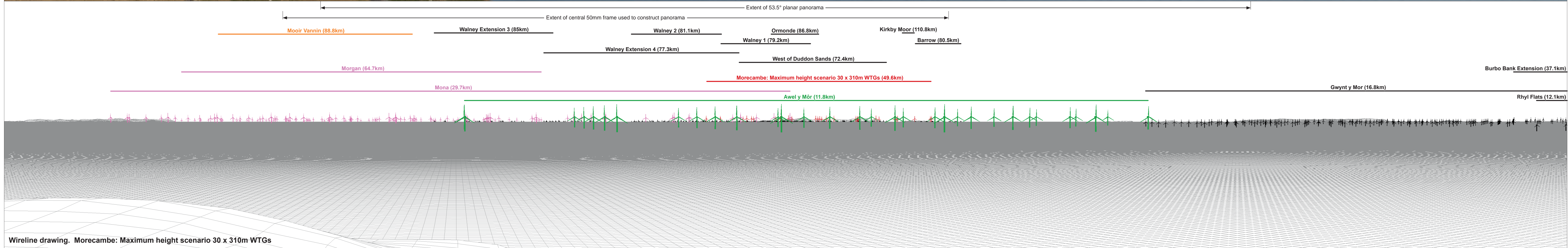
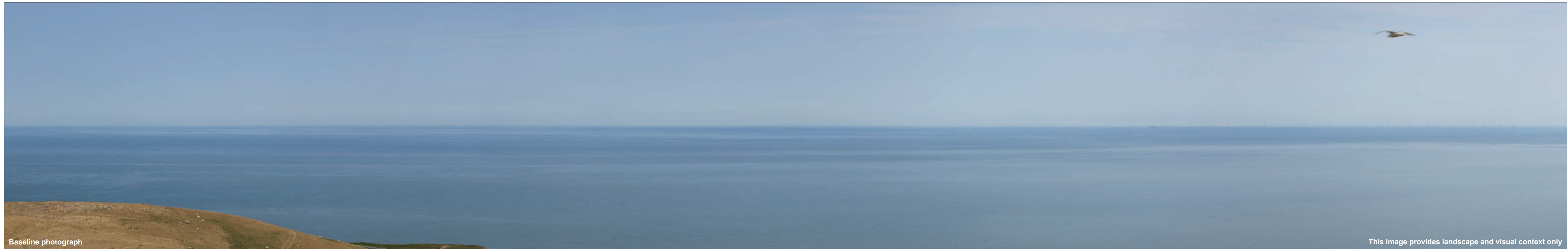


OS reference: 276659 E 383399 N
 Eye level: 201.14 m AOD
 Direction of view: 289°
 Nearest turbine: 49.587 km

Horizontal field of view: 90° (cylindrical projection)
 Principal distance: 522 mm

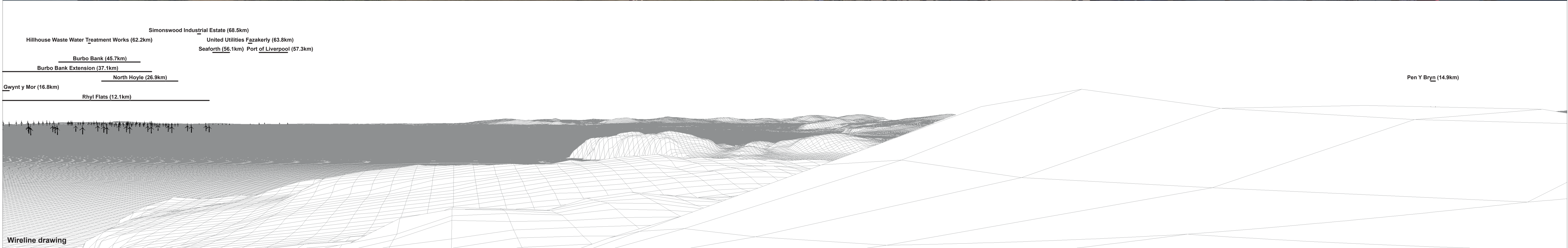
Camera: Canon EOS 6D Mark II
 Lens: EF50mm f/1.4 USM
 Camera height: 1.5 m AGL
 Date and time: 18/07/2022, 11:29

Figure: 18:46b
 Viewpoint 23: Great Orme's Head



OS reference:	276659 E 383399 N	Horizontal field of view:	90° (cylindrical projection)	Camera:	Canon EOS 6D Mark II
Eye level:	201.14 m AOD	Principal distance:	522 mm	Lens:	EF50mm f/1.4 USM
Direction of view:	19°			Camera height:	1.5 m AGL
Nearest turbine:	49.587 km			Date and time:	18/07/2022, 11:29

Figure: 18:46c
Viewpoint 23: Great Orme's Head



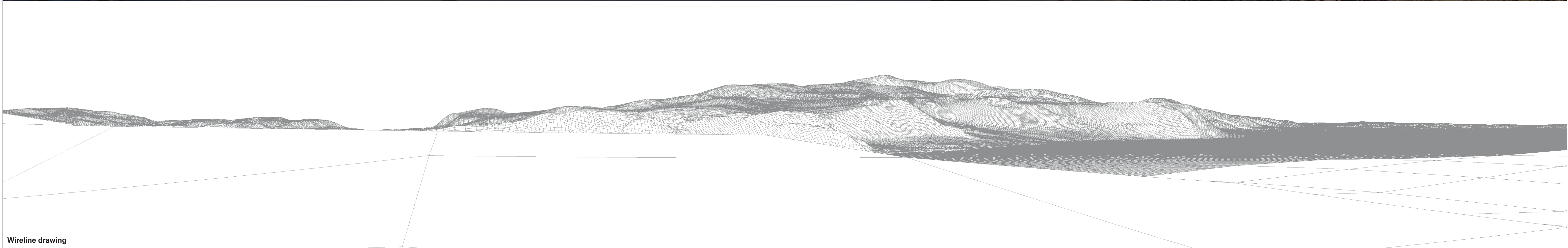
OS reference:	276659 E 383399 N	Horizontal field of view:	90° (cylindrical projection)	Camera:	Canon EOS 6D Mark II
Eye level:	201.14 m AOD	Principal distance:	522 mm	Lens:	EF50mm f/1.4 USM
Direction of view:	109°			Camera height:	1.5 m AGL
Nearest turbine:	49.587 km			Date and time:	18/07/2022, 11:29

Figure: 18:46d
Viewpoint 23: Great Orme's Head



Baseline photograph

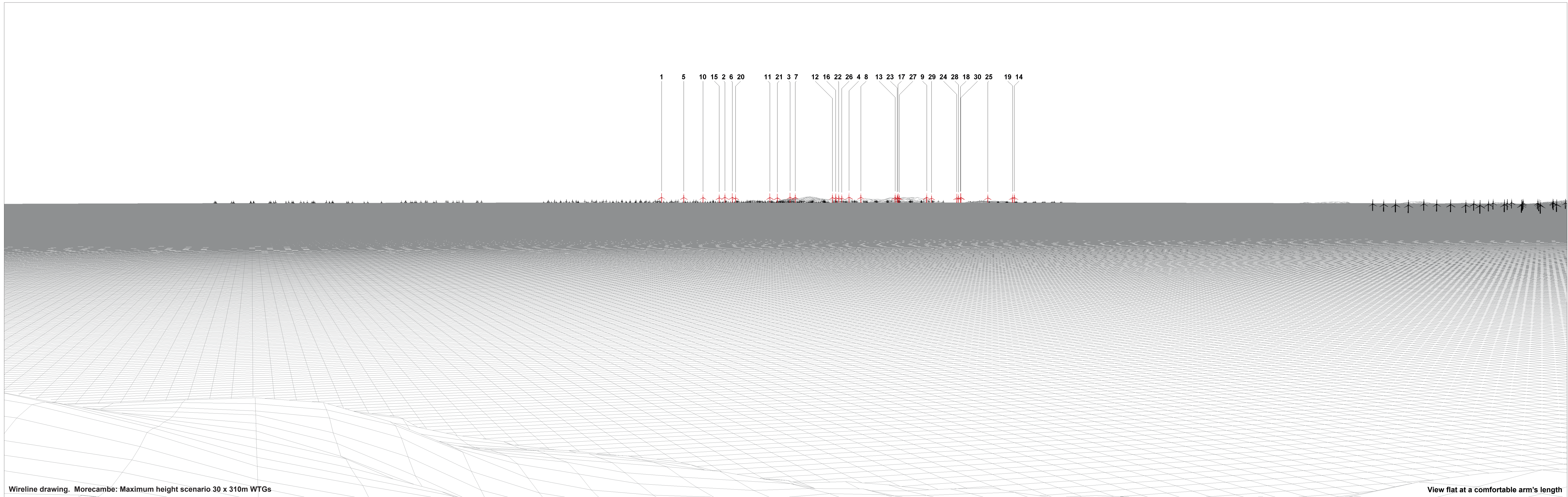
This image provides landscape and visual context only



Wireline drawing

OS reference: 276659 E 383399 N	Horizontal field of view: 90° (cylindrical projection)	Camera: Canon EOS 6D Mark II
Eye level: 201.14 m AOD	Principal distance: 522 mm	Lens: EF50mm f/1.4 USM
Direction of view: 199°		Camera height: 1.5 m AGL
Nearest turbine: 49.587 km		Date and time: 18/07/2022, 11:29

Figure: 18:46e
Viewpoint 23: Great Orme's Head



Wireline drawing. Morecambe: Maximum height scenario 30 x 310m WTGs

View flat at a comfortable arm's length

OS reference:	276659 E 383399 N	Horizontal field of view:	53.5° (planar projection)	Camera:	Canon EOS 6D Mark II
Eye level:	201.14 m AOD	Principal distance:	812.5 mm	Lens:	EF50mm f/1.4 USM
Direction of view:	19°	Paper size:	841 x 297 mm (half A1)	Camera height:	1.5 m AGL
Nearest turbine:	49.587 km	Correct printed image size:	820 x 260 mm	Date and time:	18/07/2022, 11:29

Figure: 18:46f
Viewpoint 23: Great Orme's Head



Baseline Photograph (offshore operational turbines have been rendered in this view)

View flat at a comfortable arm's length

OS reference: 276659 E 383399 N	Horizontal field of view: 53.5° (planar projection)	Camera: Canon EOS 6D Mark II
Eye level: 201.14 m AOD	Principal distance: 812.5 mm	Lens: EF50mm f/1.4 USM
Direction of view: 19°	Paper size: 841 x 297 mm (half A1)	Camera height: 1.5 m AGL
Nearest turbine: 49.587 km	Correct printed image size: 820 x 260 mm	Date and time: 18/07/2022, 11:29

Figure: 18:46g
Viewpoint 23: Great Orme's Head



Photomontage

View flat at a comfortable arm's length

OS reference: 276659 E 383399 N	Horizontal field of view: 53.5° (planar projection)	Camera: Canon EOS 6D Mark II
Eye level: 201.14 m AOD	Principal distance: 812.5 mm	Lens: EF50mm f/1.4 USM
Direction of view: 19°	Paper size: 841 x 297 mm (half A1)	Camera height: 1.5 m AGL
Nearest turbine: 49.587 km	Correct printed image size: 820 x 260 mm	Date and time: 18/07/2022, 11:29

Figure: 18:46h
Viewpoint 23: Great Orme's Head